

# Friends OF THE FOUNDATION

**McLaren**  
NORTHERN MICHIGAN  
FOUNDATION

**Our Mission:**  
To receive and administer funds to support the mission of McLaren Northern Michigan and support programs that enhance the well-being of the community.

SUMMER 2023



## Inside

- 2 Letter from Leadership
- 3 Justin A. Borra Behavioral Health Center
- 4 Staff Training Program
- 5 Nurse Intern Program
- 6 Unit-Based Clinical Educators

## Grand Opening Justin A. Borra Behavioral Health Center

Elise Fisher, Dennis Hesselink and Nancy Pulte Rickard celebrate the opening of the Justin A. Borra Behavioral Health Center and the Pulte Family Charitable Foundation Adult Inpatient Behavioral Health Unit.

# How Your Gifts Help

Your gifts make a difference in patients' lives. Your gifts provide support for staff and patients every day.

## Your generosity supports:

- Medical technology
- Medical equipment
- Patient assistance
- Facility upgrades
- Pediatric rehabilitation programs
- Preventative care and wellness initiatives
- Hospice care
- Recruitment and retention
- Behavioral health
- Education
- Innovation
- Medical excellence
- Areas of greatest need

The entire team at McLaren Northern Michigan appreciates your support—as does every patient who relies on McLaren Northern Michigan for their care.

Follow us on Facebook and Instagram and share our stories with your friends and family to encourage them to give back as well!



## NORTHERN MICHIGAN FOUNDATION

360 Connable Avenue  
Petoskey, MI 49770  
231-487-3500

Friends of the Foundation Newsletter is a publication of the McLaren Northern Michigan Foundation and is produced three times a year for contributors to the Foundation. Find out more about our work by visiting [McLaren.org/NorthernMichiganFoundation](https://McLaren.org/NorthernMichiganFoundation).

Dear Friends,

Summer is winding down, and so is the flurry of activity and excitement that brings us all to northern Michigan at this time of year. This year, our excitement was not only for summer fun, but also for the renewed energy for the projects underway at McLaren Northern Michigan.



We are sharing our funding priorities for the future within these pages.

Your commitment to our patients is truly inspiring. Your generous donations have supported a variety of programs and services that make a real difference in the lives of our patients. For example, your support has helped us to:

- Create a Behavioral Health Center, so that we can provide more comprehensive care to patients in need.
- Provide ongoing education and training for our staff, so that they can continue to provide the highest quality care possible.
- Develop an intern program for nurses, so that we can support student nurses by offering a supervised hands-on experience within the hospital.

Because of your commitment to help patients in northern Michigan, we celebrated the grand opening of the Justin A. Borra Behavioral Health Center. This new 18-bed inpatient unit will provide care for patients who previously had to travel hundreds of miles to receive treatment. Thanks to you, these patients and their families have access to excellent care, here in their community.

We appreciate you and the difference you make for health care in northern Michigan.

With gratitude,

Julie Jarema  
Vice President and Chief Philanthropy Officer  
McLaren Northern Michigan Foundation

Elise Fisher  
Board Chair  
McLaren Northern Michigan Foundation

## 2023 McLAREN NORTHERN MICHIGAN FOUNDATION BOARD OF TRUSTEES

Elise Fisher, Chair | Robert (Ham) Schirmer, Vice Chair | Courtney Font, CFP®, Treasurer | Miriam Hollar, Secretary | Kal Attie, MD | Robbie Buhl  
Katie Coleman | Steven C. Cross | Matthew J. Frentz, CPA | Chad Grant, FACHE, Interim President & CEO, McLaren Northern Michigan | Arthur G. Hailand, III  
Matthew Krieger | Patrick Leavy | Kathie Nihls | James Riehl, III | Rogan L. Saal | James Schroeder, PhD | Tracy Souder, MA, CCC-SLP

# A Grand Opening!

## McLaren Northern Michigan Celebrates our Donors and the Justin A. Borra Behavioral Health Center

McLaren Northern Michigan recently hosted three special events, the naming of both the Pulte Family Charitable Foundation Inpatient Behavioral Unit and the Patrick H. McDonald Partial Hospitalization Program, and the opening of the Justin A. Borra Behavioral Health Center. At a time when the need for mental healthcare has never been greater, McLaren Northern Michigan embarked on a journey to establish a comprehensive behavioral health center. The former medical surgical unit of the Cheboygan campus was completely remodeled, and the new inpatient unit was built to provide an optimal care environment for patients - with safety top of mind.

McLaren Northern Michigan serves approximately 900 behavioral health

patients within our two Emergency Departments in Cheboygan and Petoskey, each year. Patients often require multiple overnight stays while appropriate medical placements are found. Patients can be required to travel as far as Detroit, and even out of state, to receive inpatient behavioral health treatment. The burden is on family members to travel great distances when their loved one is in a crisis. The lack of adequate treatment for mental health issues impacts our communities in multiple ways, such as unemployment, poverty, and public safety.

On behalf of the countless patients and their families who will benefit from the new behavioral health services, we thank every donor who contributed to this project!

*"The wait for an inpatient bed for patients in Emergency Departments is painful, especially for patients who have often endured years of suffering that we don't see. The Justin A. Borra Behavioral Health Center makes a real difference - when it matters the most."*



**DR. MATTHEW MCKENNA**  
PSYCHIATRIST & MEDICAL DIRECTOR



Communal eating area in the new facility with built-in beverage dispenser. The nurses' station overlooks the common areas.



Semi-private rooms allow patients to share support as they engage in the program's services.

# Training for BHC Staff

## Behavioral Health Center Staff Receive Training to Best Serve Patients

The new Justin A. Borra Behavioral Health Center was designed to provide an ideal environment to care for patients. Every element was selected for safety and the positive impact on patients. The color palette and nature-inspired design make the unit feel warm and homelike.

Just as important as the physical space is the staff who will be caring for the patients. A grant ensured that all staff are prepared to provide the best possible care for behavioral health patients. Donor support provides each staff member with 280 hours of training each, including on-site training, online modules, and opportunities to visit established behavioral health centers across the state. This training covered a wide range of subjects and prepared nurses, technicians, and therapists to care for patients in our community.

We would like to introduce you to some of the caring, dedicated staff who will be part of the care team at the new Behavioral Health Center. Thank you to all the donors who are making a difference for patients seeking treatment for mental health challenges.

### Part of the Patient Care Services Team



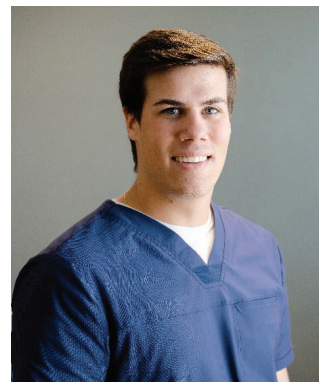
Megan Tierney, BSN, RN;  
Manager of Patient Care Services



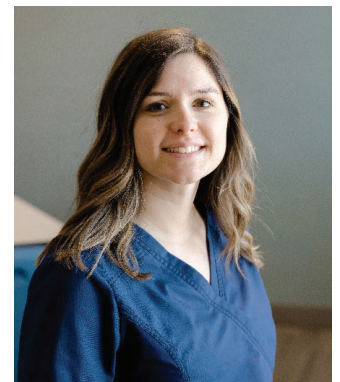
Jeffrey Bucknam, Occupational Therapist;  
Catherine Queen, Recreational Therapist



Phoebe Clute,  
Psychiatric Technician



Carter McCarthy,  
Graduate Nurse



Jody Waybrant, RN

**Your gifts are so important in supporting northern Michigan health care.** Please consider supporting the Foundation so we can continue to provide care like this for our patients, through staff training, new equipment and improvements to facilities. Every gift – no matter the size – is important and makes an impact.

*Thank you!*

# Nurse Intern Program

## Donor Support Helps Improve Patient Care

McLaren Northern Michigan, like much of the country, is experiencing a nursing shortage. This shortage has required an accelerated progression of new nurses to nursing experts as they are expected to function at a higher level in a shorter period of time. McLaren Northern Michigan is accomplishing this endeavor through the Nurse Intern Program.

The Nurse Intern Program provides an opportunity for student nurses to develop their patient care skills while supporting the current nursing staff at McLaren Northern Michigan. Nurse Interns are trained under the direct supervision of a Registered Nurse. The units participating in the program include the Intensive Care Unit, the Cardiovascular Unit, the Medical/Surgical Unit, the Obstetric Unit, and the Emergency Department.



McLaren Northern Michigan is partnered with colleges across the state to recruit nurse interns to provide valuable on-the-job-training, as well as support for the nursing staff. These recruiting efforts will continue into 2024.

John Isaksson is one of the McLaren Northern Michigan nurse interns. John enjoys seeing a patient's progress from the beginning of their stay until their discharge. He said, "I have witnessed patients who've had a procedure in the Cath Lab make so much improvement that they're ready to go for a bike ride. It has been an incredible experience to see firsthand the amazing care at McLaren

Northern Michigan." Thank you for investing in the future of nursing!

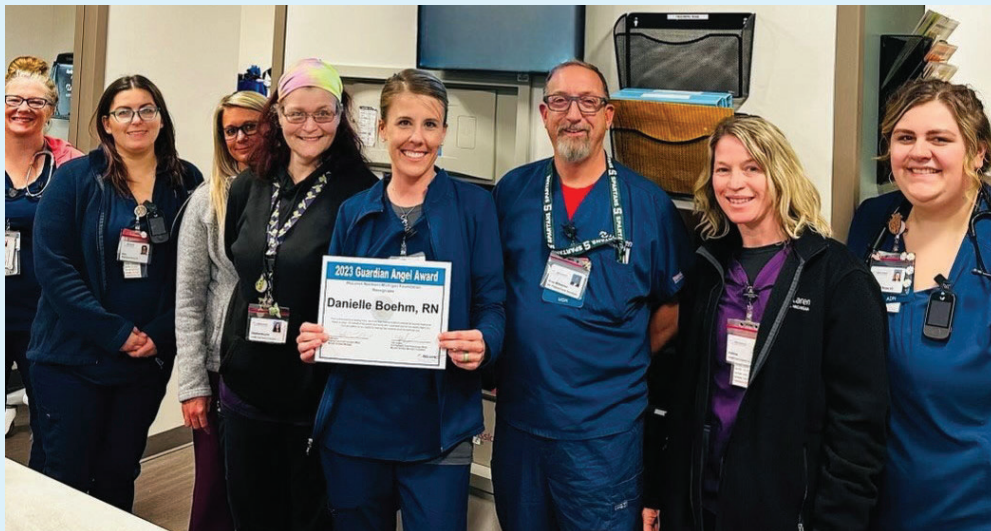
*"As the Director of Critical Care, I see how beneficial the Nurse Intern program has been for our patients. Experienced ICU staff look forward to partnering with the interns because of how valuable this program has been. When these student nurses start as graduate nurses they will be ahead of the curve. We are grateful to be able to continue this program with your support!"*



**ABBY BLASKOWSKI, MSN-ED, RN**  
DIRECTOR OF CRITICAL CARE

# A Way to Say "Thank You"

## Honor a Caregiver



Congratulations to Danielle Boehm, RN! Danielle is a Registered Nurse and was recently recognized with a Guardian Angel award for her outstanding care of patients. Thank you, Danielle, for everything you do!

The Guardian Angel program helps grateful patients and families recognize McLaren Northern Michigan caregivers who've made a difference in their lives. Guardian Angel awards are a way to say "thank you" for the care provided at a medical office visit, emergency visit, outpatient procedure, or inpatient stay. Guardian Angel gifts can be any size - there is no minimum donation amount to honor your caregiver.

Recipients are publicly recognized and receive a special pin and certificate. To view a list of recipients or to honor a caregiver, visit our website at <https://bit.ly/MNMFhonoracaregiver>.

# Maintaining Nursing Excellence

## Unit-Based Clinical Education - Helping Nurses on the Floor



Jessica Debord, BSN, RN Clinical Educator Cardiovascular Unit  
Nicole LaHaie, BSN, RN Clinical Educator Medical/Surgical Unit  
Katie Sharp, BSN, RN Clinical Educator Critical Care  
Kali Smith, BSN, RN Clinical Educator Emergency Department

McLaren Northern Michigan's goal is to help clinical staff stay current in the latest medical and technology advancements and give them the resources to feel supported in their practice. In that effort, we have adopted a department-focused education model which provides support for nurses where and when they need it most - at the bedside. We can have educators on a hospital unit assessing the gaps in knowledge and providing at-the-elbow support to new nurse graduates.

The clinical educator model trains newly hired and graduated nurses, and also provides training for current staff on new

equipment and procedures. Under the model, a team of Clinical Education nurses are responsible for the education and training needs of the health care team in specific units. McLaren Northern Michigan currently has Unit-Based Clinical Educators in the following departments: Critical Care Unit, Cardiovascular Unit, Emergency Department, and Medical/Surgical Unit.

### Benefits of having a unit-based clinical educator include:

- Increased patient safety: educators can help identify and address potential risks to patient safety.
- Improved quality of care: educators assist nurses in providing higher quality care by training in the latest nursing practices.
- Increased job satisfaction: nurses experience greater job satisfaction when they receive support and resources from clinical educators.

We are grateful to have donor support for this program.

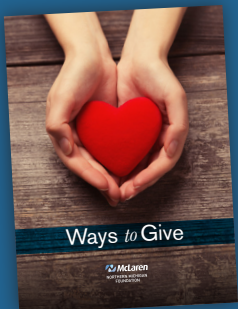
*"I am so honored to be the Medical/Surgical Educator. It's a job I am highly passionate about and am very eager to see the progression transform. Thank you for this opportunity."*

NICOLE LAHAIE, BSN, RN

### Our Commitment to Education

- Clinical Educators
- Scholarships
- Nurse Intern Program
- Physician Residency

## Ways to Give



Philanthropy has long been an integral part of the success of McLaren Northern Michigan and will continue to impact initiatives that create access to state-of-the-art care in northern Michigan.

One way to give is through donating appreciated stock. This type of donation

is a popular giving option - and one that provides a great benefit to you and our patients. Gifts of stock that have appreciated in value and have been held for at least one year provide you with an immediate income tax deduction based on the current value. Also, because there is no capital gains tax when you make the gift, you save on taxes twice. Giving appreciated stock is just one strategy that makes good financial sense.



Learn about the various ways you can make an impact. From structuring a gift that provides you tax advantages,

honoring a loved one with your donation, or arranging for a planned gift, our team of development professionals is available to help.