

# The Cardiovascular Health Experts



Michigan

**Heart & Vascular**  
Specialists

A department of McLaren Northern Michigan

# Exceptional Care... FROM THE HEART

## DECADES OF Experience, Service, and Caring

Serving northern Michigan and the Upper Peninsula since 1972, the physicians of Michigan Heart & Vascular Specialists continue their commitment to providing you with compassionate, high quality, and state-of-the-art cardiovascular and thoracic services. Our board certified cardiologists and surgeons, along with highly trained technical, clinical, and support staff, are positioned to provide for all your cardiovascular needs — from diagnostic evaluation through outpatient consultation and inpatient hospital care.





## EXCEPTIONAL CARE...

### Close to Home

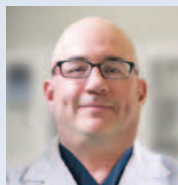
Heart and vascular care changes rapidly as technology becomes more sophisticated. Increased knowledge, however, should not detract from the close, personal doctor/patient relationship that every patient deserves and expects.

#### SERVICES OFFERED

- Evaluation and Treatment of Cardiac and Vascular Disease
- Evaluation and Treatment of Rhythm Disorders, including Ablation and Cryoablation
- Stress Testing
- Nuclear Imaging
- Echocardiography
- Non-invasive Vascular Studies
- Holter and Event Monitoring
- Cardiac CTA
- Coronary and Vascular Interventions
  - Transcatheter Aortic Valve Replacement (TAVR)
  - Patent Foramen Ovale (PFO) and Atrial Septal Defect (ASD) Closures
  - Cardiovascular and Thoracic Surgery
    - Minimally-invasive Valve Surgery
- Specialty Clinics
  - Heart Rhythm Clinic
  - Heart Failure Clinic
  - Structural Heart Clinic
  - Vein Clinic
- Device Implantation and Clinic Follow-up
- Pediatric Cardiology Consultation and Treatment Coordination

## EXCEPTIONAL CARE... From an Award-winning Team

Our dynamic team of physicians represents the best in heart and vascular care by incorporating the talents of the finest cardiovascular specialists with the most advanced treatments available.



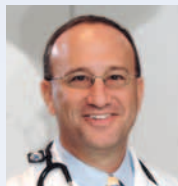
**Chris Akins, MD**

- › CARDIOVASCULAR AND THORACIC SURGERY
- › MINIMALLY INVASIVE TECHNIQUES
- › CORONARY BYPASS SURGERY AND GRAFTING
- › HEART VALVE SURGERY AND REPLACEMENT
- › TAVR



**Daniel Buerkel, MD**

- › EVALUATION AND TREATMENT OF RHYTHM DISORDERS, INCLUDING ABLATION
- › DEVICE IMPLANTATION
- › COMPLEX ABLATION
- › VTACH ABLATION
- › WATCHMAN



**Louis Cannon, MD**

- › CORONARY AND VASCULAR INTERVENTION
- › CAROTID STENTING
- › CLINICAL RESEARCH
- › TAVR



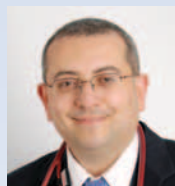
**Harry Colfer, MD**

- › CORONARY INTERVENTION
- › LVAD/RVAD
- › DEVICE IMPLANTATION
- › CLINICAL RESEARCH



**David Corteville, MD**

- › ECHOCARDIOGRAPHY
- › NUCLEAR IMAGING
- › VALVE DISEASE
- › CLINICAL RESEARCH
- › TAVR



**Waleed Doghmi, MD**

- › CARDIOVASCULAR DISEASES
- › ECHOCARDIOGRAPHY
- › CT ANGIOGRAPHY
- › HEART RHYTHM MANAGEMENT



**Thomas Earl, MD**

- › CORONARY INTERVENTION
- › NUCLEAR IMAGING
- › CLINICAL RESEARCH
- › TAVR



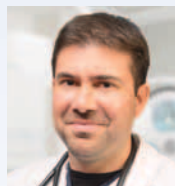
**Gerald Gadowski, DO**

- › CARDIOVASCULAR DISEASES
- › ECHOCARDIOGRAPHY
- › NUCLEAR IMAGING
- › CARDIAC CTA



**Linda Gossett, MD**

- › CARDIOVASCULAR DISEASES
- › ECHOCARDIOGRAPHY
- › NUCLEAR IMAGING
- › HEART FAILURE



**Dalton Miranda, MD**

- › CARDIOVASCULAR DISEASES
- › NUCLEAR IMAGING
- › ECHOCARDIOGRAPHY
- › HEART FAILURE
- › CLINICAL RESEARCH



**Naomi Overton, MD**

- › EVALUATION AND TREATMENT OF RHYTHM DISORDERS, INCLUDING ABLATION
- › DEVICE IMPLANTATION
- › COMPLEX ABLATION
- › VTACH ABLATION
- › WATCHMAN



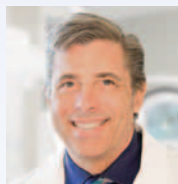
**Jason Ricci, MD**

- › CORONARY AND VASCULAR INTERVENTION
- › ABDOMINAL AORTIC ANEURYSM REPAIR
- › PFO CLOSURE
- › CAROTID STENTING
- › CLINICAL RESEARCH
- › TAVR
- › WATCHMAN



**Duane Schuil, MD, PhD**

- › CORONARY AND VASCULAR INTERVENTION
- › CAROTID STENTING
- › LVAD/RVAD



**J.D. Talbott, DO**

- › CARDIOVASCULAR AND THORACIC SURGERY
- › MINIMALLY INVASIVE TECHNIQUES
- › CORONARY BYPASS SURGERY AND GRAFTING
- › HEART VALVE SURGERY AND REPLACEMENT
- › TAVR

## **Pediatric Specialist**

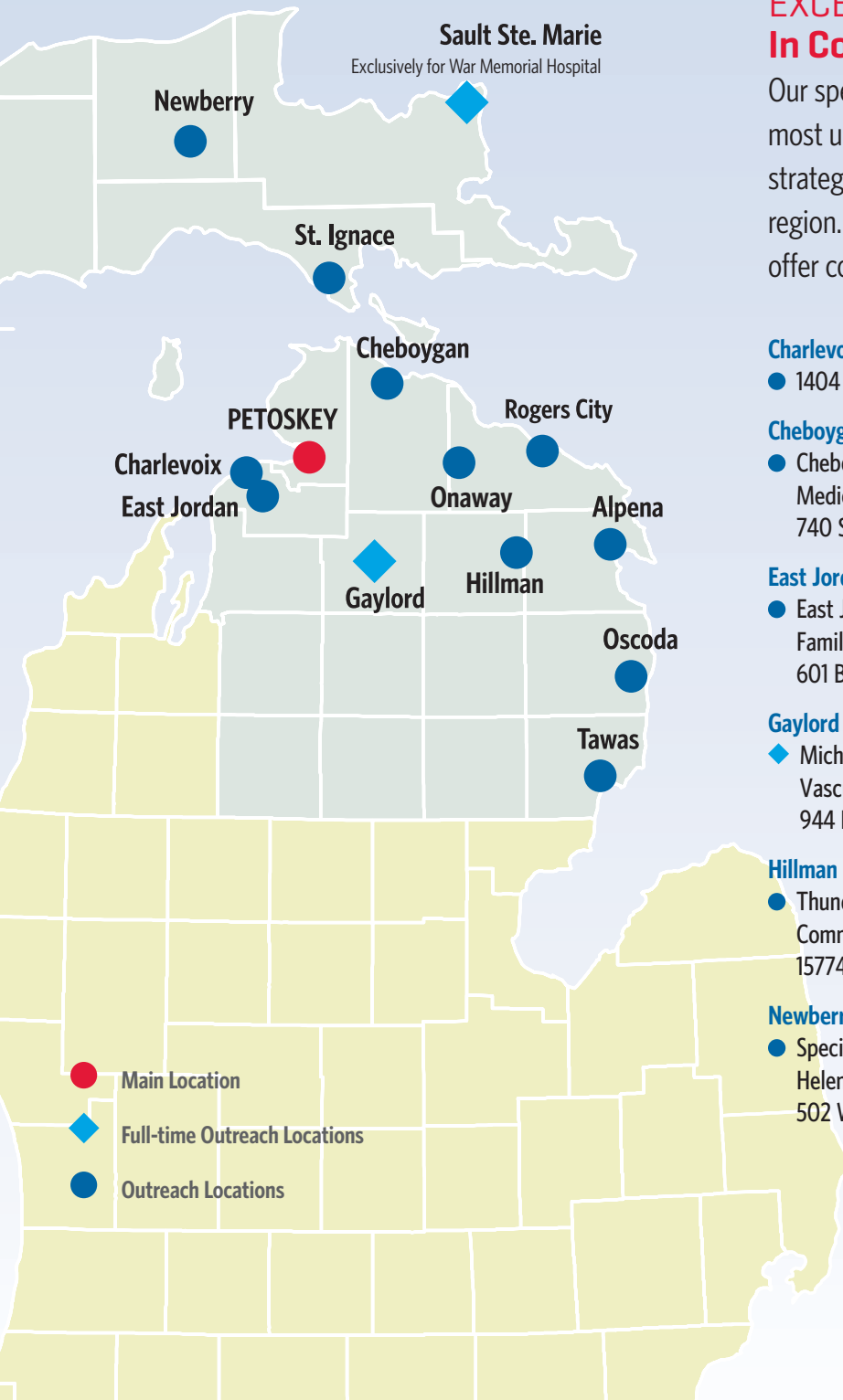
Pediatric cardiology consultation and treatment coordination provides regional care to limit travel for the youngest patients.



**Catherine Webb, MD**

*University of Michigan's C.S. Mott Children's Hospital  
Attending Pediatric Cardiologist*

- › PEDIATRIC CARDIOLOGY



## EXCEPTIONAL CARE... In Convenient Outreach Locations

Our specialists are committed to providing the most up-to-date cardiovascular and thoracic strategies to patients throughout our 22-county region. Multiple outreach locations allow staff to offer convenience and expertise.

### Charlevoix

- 1404 Bridge St

### Cheboygan

- Cheboygan Community Medical Center  
740 S. Main St

### East Jordan

- East Jordan Family Health Center  
601 Bridge St

### Gaylord

- ◆ Michigan Heart & Vascular Specialists  
944 N. Center Ave

### Hillman

- Thunder Bay Community Health Service  
15774 State St

### Newberry

- Specialty Clinic  
Helen Newberry Joy  
502 W. Harrie St

### Onaway

- Thunder Bay Community Health Service  
21258 M-68

### Oscoda

- Alcona Health Center  
5671 N. Skeel Ave

### PETOSKEY (Main Office)

- Burns Professional Building  
560 W. Mitchell St  
Suite 400

### Rogers City

- McLaren Northern Michigan Medical Specialists  
573 N. Bradley Hwy

### St. Ignace

- Call for Appointment Location  
(800) 248-6777

### Sault Ste. Marie

- ◆ Heritage Building  
560 Osborn Blvd  
(906) 253-0688

### Tawas

- Northwoods Internal Medicine  
312 M-55



## MOBILE DIAGNOSTICS... Bringing Heart Expertise to Patients

The McLaren Northern Michigan Mobile Diagnostic Unit brings cardiovascular services to select outreach locations in northern Michigan. Patients of referring physicians receive diagnostic testing and imaging from a full team of medical professionals, administered from a comfortable, state-of-the-art mobile unit.

- ❖ Cardiac Nuclear Imaging
- ❖ Echocardiography
- ❖ Vascular Imaging
- ❖ Stress Testing



Michigan  
**Heart & Vascular**  
Specialists

A department of McLaren Northern Michigan

**(800) 248-6777 | [michiganhvs.com](http://michiganhvs.com)**  
560 W Mitchell Street | Ste 400 (4th Floor)  
Burns Professional Building | Petoskey, MI 49770

MKT 975.002 (1/17)