

A photograph of a healthcare worker in blue scrubs supporting an elderly woman with a walker. The woman is wearing a pink shirt and white pants. The healthcare worker has her arm around the woman's shoulder. They are standing in a bright, well-lit area, possibly a hospital hallway or a common area. The background is slightly blurred, showing what appears to be a window or a bright light source.

Redesigning Health Care

A Case for Support



McLaren Greater Lansing will continue providing the outstanding health care services the community has come to expect in state-of-the-art facilities so fewer patients will need to seek treatment outside of the Greater Lansing area.

Your Community, Your Hospital

These three words, **McLaren Greater Lansing**, come immediately to mind when you think:

- "I've got chest pains, an emergency. Where do I go?"
- "I'm having a baby. Who can I trust?"
- "I have a strong family history of cancer. What do I do?"

McLaren Greater Lansing, can you think of a family member, a friend, a coworker who has not been positively touched by those three words?

For 105 years, McLaren Greater Lansing has anticipated, prepared for, and met the full-range of medical needs in our community. For 105 years, the focus has remained on the best patient experience, the highest level of excellence, and the greatest investment in the future.

It is this commitment to our community that spurred one patient to say: "The care I received at McLaren Greater Lansing is something I brag about. I'm thankful for the outstanding caregivers that helped me and my family."

It is no exaggeration to state: Our community needs McLaren Greater Lansing. Needs the top-quality care we provide and our outstanding staff that delivers it to **Every Patient, Every Time**.

And now, McLaren Greater Lansing needs you.

We have embarked on a thrilling new adventure to redesign health care for everyone in our community. At the heart is a comprehensive health care campus with a new acute-care hospital, cancer center, and ambulatory care center. It will provide the full spectrum of state-of-the-art medical care and anchor teaching, training, and research in collaboration with Michigan State University.

We are a financially strong, not-for-profit institution. We provide excellent care, although it is in buildings that have outlived their time. A bond issue will fund new construction. But we are relying on our community to contribute \$20 million to this exciting initiative to provide a number of important enhancements. Amenities to enhance patient and family member comfort. A healing garden. A chapel for all faiths. And that just highlights a few of the opportunities, many with a chance for donor naming recognition.

We look to the community as our co-partner in this extraordinary opportunity to advance care in our region for decades to come.

Three words, **McLaren Greater Lansing**, come to mind again. One hundred and five years. Over a century of service.

And now we are doing more. Building on success. Ensuring the future.

Please join us, the time is now!

McLaren Greater Lansing provides such a great benefit to our community. We are going to provide even more. And the time to do it is ... **now**.

Time to join with us as our new campus takes medical care in Greater Lansing to the next level.

This project is essential, *but we need your help and support.*

Together, we can Redesign Health Care.

Redesigning Health Care

McLaren Greater Lansing takes its commitment as a community hospital seriously. For us, that means more than simply being a hospital located in Lansing—it means we are a valuable member of this community. We believe we have both the obligation and privilege to be an active participant always striving to improve the community in which we live and serve.

McLaren Greater Lansing and Michigan State University are collaborating to fundamentally elevate the health care landscape of the entire Lansing region, and to revolutionize health care delivery for providers and caregivers from around the world to emulate. We are calling this initiative, **Redesigning Health Care**.

This collaboration will redefine the delivery of care, medical education, and research, ultimately saving lives and building a healthier society through advanced research, innovation, training caregivers of the future, and developing new therapies and treatments to cure and overcome the effects of disease.

In the literal sense of building community, we are elated to announce a key component of **Redesigning Health Care**—a \$500 million investment in the Lansing region to construct a new health care campus and make site improvements within the City of Lansing adjacent to Michigan State University scheduled to open in approximately three years.

The new health care campus will be developed on land purchased from the MSU Foundation in its University Corporate Research Park, located between Collins Road and US 127. The campus will house a 240 bed state-of-the-art hospital, cancer center, ambulatory care center, and other services to support health care delivery, educational opportunities, and medical research. When fully complete, the new facilities will be home to more than 1,000 physicians, researchers, educators, and other members of our academic and medical teams.

The new campus will serve as a replacement and consolidation facility for McLaren Greater Lansing and McLaren Orthopedic Hospital's aging campuses. More importantly, it will combine new state-of-the-art facilities, advanced technologies, easier access off major highways that connect the region, and countless more benefits with McLaren's signature compassionate care.

Much more than bricks and mortar, we intend to revolutionize the traditional hospital and office setting to build the safest, most efficient hospital imaginable. The buildings and our processes of care will be designed by expert clinicians, nurses, technicians, physicians, the people who support the delivery of health care, and—most importantly—with feedback from patients.



*This project will
reinvent traditional hospital
and ambulatory care design
making it possible to build the
safest, most efficient health care
campus imaginable*



Wetlands

Parking Garage

Forest Road

MSU Foundation

Ambulatory Care Center

Mech

Dock

Emergency Department

Ambulance Garage

Helpipad

Wetlands

HOSPITAL

Collins Road

Granger Building

Cancer Center

We are using this opportunity to make a truly world-class experience for patients, visitors, caregivers, researchers, and students. McLaren and Michigan State University's collaboration extends far beyond facilities. As a teaching site for MSU's Colleges of Medicine and Nursing, McLaren Greater Lansing has partnered with the University for decades training future caregivers.

As part of **Redesigning Health Care**, Michigan State University and McLaren Greater Lansing will also collaborate on initiatives to advance the University's academic, research, and clinical care missions including:

- Access to data to accelerate clinical research efforts of MSU and McLaren,
- Recruitment of researchers, physicians, nurse practitioners, and physician assistants to the MSU HealthTeam and University,
- Support for team-based learning philosophies in the design and workflow of the facilities to create a world-class medical education experience,
- Cooperation on clinical trials through MSU's Institutional Review Board to provide patients with the latest clinical therapies and treatments,
- Collaboration on multiple clinical service lines to bring higher quality, more efficient care to the community, and more.

Our current facilities along Pennsylvania Avenue and on Greenlawn Avenue, some of which date to the 1930s, will be redeveloped as part of this project. We are working with the Lansing Economic Area Partnership to identify innovative ways and new partners to help redevelop the campuses, create additional jobs for the city, and improve the region.

An estimated 2,500 jobs will be created to construct the new health care campus. We expect to add approximately 80 employees to our workforce when the campus opens, in addition to filling about 75 current full- and part-time openings at the hospital. We are committed to using union labor and Lansing-based organizations to construct the facilities whenever possible.

Though McLaren Greater Lansing has operated as a successful business, consistently exceeding budget projections during the past four years, the hospital is in fact a not-for-profit organization. Completing this project will require a remarkable financial commitment. Existing operating reserves and debt financing, combined with generous contributions from the community, will allow us to redesign health care in Greater Lansing by creating a state-of-the-art hospital that matches the world-class care provided by our talented caregivers.

The support and enthusiasm for **Redesigning Health Care**, our vision to revolutionize health care, right here in Lansing, has been phenomenal. We hope you share our sense of pride and joy in collectively building our community and driving Lansing to be a national and world health leader.

Please join us!



Redesigning Health Care

Guiding Principles

- Become a **DESTINATION OF CHOICE** for physicians, caregivers, employees, and community in terms of access to care: ease/ convenience of receiving services
- Become a **NATIONAL BENCHMARK** in delivering evidenced-based care incorporating **LEAN** principles, safety, and applying best practices
- Best value for patients as defined by **QUALITY OUTCOMES**, cost, and service
- Achieve the highest **RETURN ON INVESTMENT**
- Transform **EXPERIENCE** for patient, family, and caregiver by mandating a culture of service and a nurturing environment
- Foster a continuous **ENVIRONMENT OF LEARNING** through clinical education, research, and innovation

Redesigning Health Care

McLaren Greater Lansing is redesigning health care in Greater Lansing by creating a comprehensive health care campus to accommodate advances in medical technology, increase capacity needs, and transform the way patient care is delivered. Our quest for better health and high-quality care at an affordable cost is not only our mission but the driving force behind our commitment to truly redesign care delivery. We use evidence-based medicine, the treatments that have been proven effective to provide the right care, in the right setting, at the right time to **Every Patient, Every Time**.

Training Caregivers

As we work together to reshape health care delivery, research, and education in the region for generations to come, a vital component of that success will be McLaren, Michigan State University, and other academic partners collaborating to train the caregivers of the future. A key element will be to identify ways to help young people find the path to health care careers. Working with Michigan State University, Lansing Community College, the Lansing Promise, school districts across Greater Lansing and others, we will explore ways to help build the pipeline of future health care talent.

Nursing Education

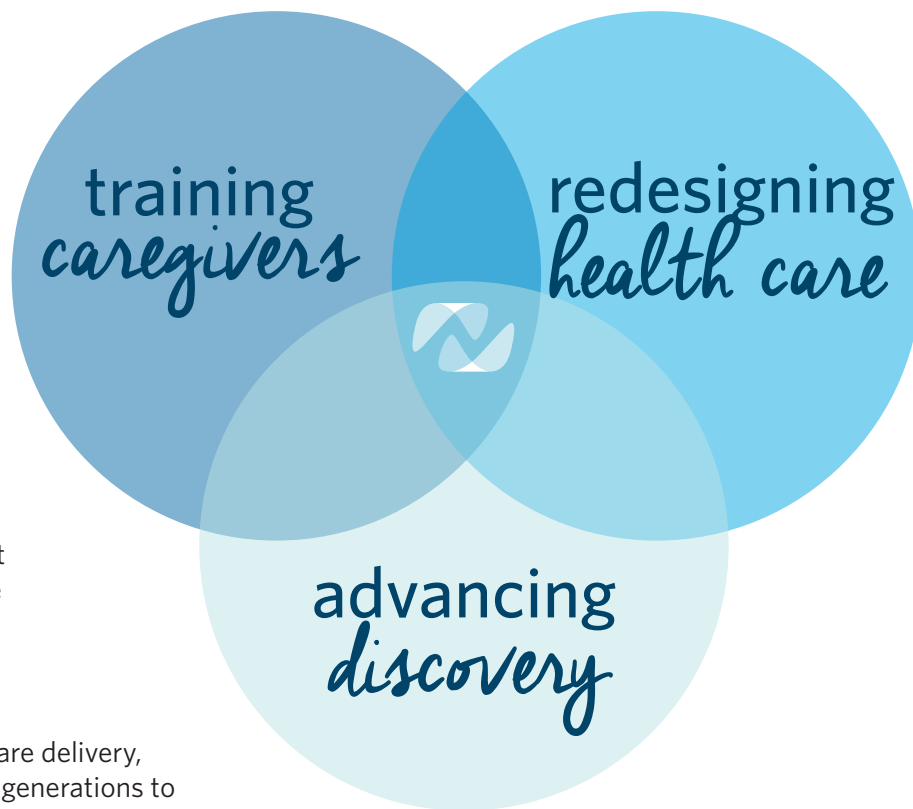
McLaren's robust nursing education program annually trains nearly 350 nurses from top regional nursing programs, including Lansing Community College, Davenport University, Baker College, Montcalm Community College, the University of Michigan, and Michigan State University. Under the supervision of their instructors and clinical nurse educators, these future nurses experience hands-on training to develop clinical expertise, and learn the important role providing compassionate care plays in their patients' healing.


Physician Education

As a teaching site of Michigan State University, McLaren Greater Lansing annually trains more than 150 residents, fellows and medical students from the College of Medicine. Since establishing our residency and fellowship programs in 1950, we have trained more than 2,000 physicians. Many attending and resident McLaren physicians serve in Michigan State University faculty appointments, actively instructing and mentoring the university's medical students. After completing their education, many physicians choose to continue serving McLaren patients. Currently, more than 125 Michigan State University physicians are on the McLaren Greater Lansing medical staff and more than 2,000 procedures are performed annually by MSU surgeons at McLaren Greater Lansing.

Advancing Discovery

Medical research is a fundamental component of medical innovation. As such, McLaren and Michigan State University researchers currently partner on 36 active research protocols to better understand and treat breast cancer, prostate cancer, colon cancer, heart attacks, heart failure, COPD, strokes, and more. In addition, McLaren Orthopedic Hospital is also home to the Michigan State University Center for Orthopedic Research. As we continue growing our academic and clinical partnerships, we are constantly exploring new ways to give researchers unprecedented access to data that will lead to pioneering advancements in medical research.





This new facility will help recruit top physicians and researchers to the region by providing access to tools and data that will build a healthier society and develop new lifesaving therapies and treatments.



T

Trust - Portrays confidence in, and reliance on, good qualities; especially fairness, truth, honor, and accountability.

E

Excellence - Performs overall job responsibilities at a very high quality or standard.

A

Accountability - Is responsible for own actions and ensures that others are held accountable for their actions, as appropriate.

M

Motivation - Displays a feeling of interest and enthusiasm in the work that is performed. Energizes and encourages other staff.

W

Welcoming - Expresses a friendly or courteous greeting to all medical staff, patients, visitors, and staff.

O

Organization - Conducts work in a systematic and efficient manner. Works cooperatively with coworkers to conduct business.

R

Respect - Shows consideration and appreciation to medical staff, patients, visitors, and staff. Maintains patient confidentiality and respects the rights of patients.

K

Kindness - Is considerate and demonstrates a caring and compassionate attitude when interacting with others.

Leadership

MCLAREN GREATER LANSING FOUNDATION BOARD

OFFICERS

Scott S. Stewart, Chair
The Huntington National Bank

Rick Wendorf, PhD, Vice Chair
Community Philanthropist

Charles "Rusti" Owens, Treasurer
C2AE

Lynn K. Henley, Secretary
Rehmann Group

MEMBERS

E. James Barrett
McLaren Greater Lansing
Board of Trustees

Sara Dolan, CPA, MBA
MSU Federal Credit Union

Brenda J. Geoghegan
The Huntington National Bank

Sarah L. Jennings, CPA, CFE
Maner Costerisan

Calvin L. Jones
Lansing Board of Water and Light

Casey E. Kandow, MS, MBA
McLaren Greater Lansing

Lisa Allen Kost
CB-HB Commercial

Nancy Meddaugh, PhD
McLaren Greater Lansing Volunteers

John O'Toole
The Christman Company

Charles J. Taunt, Jr., DO
Michigan Orthopedic Center

Christine Tenaglia, DDS
Dentist

Angela Witwer
Edge Partnerships, LLC

Lyn Donaldson Zynda
ZHV Properties LLC

TRUSTEE EMERITI

Jim Beck
KCWY

Seong H. Chi, MD
Retired, Cardiothoracic Surgeon

Shelley Davis
K12, Inc.

Salvatore J. Durso
The Centennial Group

Nancy A. Elwood
Merrill Lynch

Thomas E. Hoffmeyer
Retired, Gorsline Runciman

Theresa A. Hubbell
Retired, Coldwell Banker Hubbell
BriarWood

Becky Beauchine Kulka
Becky Beauchine Kulka Diamonds
& Fine Jewelry

Chuck L. Lasky
Lasky, Fifarek & Hogan, P.C.

Darrell A. Lindman
Fraser Trebilcock

Dennis M. Louney
DML Consulting

Ralph M. Shaheen
Shaheen Chevrolet, Inc.

Jeffrey S. Williams
Williams AutoWorld

This project will not only create thousands of jobs for Lansing area residents, but will also act as a catalyst for significant regional economic development and attract talent from around the globe.



MCLAREN GREATER LANSING HOSPITAL BOARD

OFFICERS

E. James Barrett, Chair

Ralph M. Shaheen, Vice Chair
Shaheen Chevrolet, Inc.

Paula Cunningham, Secretary
AARP of Michigan

MEMBERS

William Davidson, PhD
Michigan State University

Dana J. Duren, DO, Chief of Staff-Elect
McLaren Greater Lansing Medical Staff

Salvatore J. Durso
The Centennial Group

Theresa A. Hubbell
Retired, Coldwell Banker Hubbell BriarWood

Timothy J. Johnson
Eaton Rapids Medical Center

Mia F. Michelena, DO, Chief of Staff
McLaren Greater Lansing Medical Staff

Mark O'Halla
McLaren Health Care

Charles Steinberg
Retired, Michigan Coalition Against Homelessness

Scott S. Stewart
The Huntington National Bank

Barbara Tatroe
McLaren Greater Lansing
Emergency Department

Linda Vail
Ingham County Health Department

TRUSTEES EMERITUS

H. James Fitzgerald
Retired, Fitzgerald Henne & Associates

Donald A. Hines
Retired, Fraser Trebilcock

Thomas E. Hoffmeyer
Retired, Gorsline Runciman

Patricia M. Lowrie
Retired, Michigan State University

Barbara J. Sawyer-Koch
Retired, Michigan Department of Treasury

Everett R. Zack
Retired, Foster Zack & Lowe

MCLAREN GREATER LANSING VOLUNTEER EXECUTIVE BOARD

Nancy Meddaugh, PhD
President

Peg Pawelek Brown
Past President

Siray Taylor
Secretary

Chuck Meddaugh
Treasurer

Sharon Conti
Liaison

Cas Wesolek
Fundraising Chair

MCLAREN GREATER LANSING EXECUTIVE TEAM

Casey E. Kadow, MS, MBA
Interim President & CEO/Chief Operating Officer

Linda M. Peterson, MD, FAPA, FAPM
Chief Medical Officer

Dale R. Thompson, CMA
Chief Financial Officer

Camille Jensen, MSN, BS, RN-CENP
Chief Nursing Officer

Brian M. Brown, MBA, APR
Vice President, Marketing, Planning and Public Relations

Amy Dorr, MSA
Vice President, Human Resources

Sarah L. Spradlin, MPA, CFRE
Vice President, McLaren Greater Lansing Foundation

McLaren Greater Lansing Milestones

1913

Ingham County Tuberculosis Sanatorium opens with 10-bed capacity

1930

A four-story brick building is constructed to accommodate 100 patients

1954

Ingham County Tuberculosis Sanatorium becomes Ingham County Chest Hospital

1959

McLaughlin Osteopathic Hospital moves to Pennsylvania Avenue and changes name to Lansing General Hospital

1966

First open-heart surgery is performed to close a hole in a 15-year-old's heart

1980

Nation's first arthroscopic surgery center opens at Ingham Medical Center

1991

The McRee Guest House opens its doors for families of hospitalized patients

1997

A formal affiliation with McLaren Health Care commences

2012

Ingham Regional Medical Center undergoes rebranding and takes new name McLaren Greater Lansing

2014

Mid-Michigan Physicians, one of the largest private practice medical groups in Greater Lansing joins McLaren Health Care

2017

McLaren Greater Lansing partners with Helen DeVos Children's Hospital to Enhance Care for Children and Families

Breast Care Center receives national accreditation by the National Accreditation Program for Breast Centers from the American College of Surgeons

McLaren Orthopedic Hospital ranked among the top 25 hospitals in the nation and 1st in Michigan for major orthopedic surgery by CareChex

McLaren Greater Lansing announces plan to build a new state-of-the-art health care campus adjacent to MSU

1924

A 30-bed infirmary is built

1941

Drs. Lawrence Jarrett and Harriet Jarret open the McLaughlin Osteopathic Hospital, and first baby is born

1958

Ingham County Chest Hospital receives accreditation from the Joint Commission on Hospital Accreditation

1960

Ingham County Chest Hospital becomes Ingham Medical Hospital, a 170-bed acute care facility

1972

New hospital is completed and dedicated (Greenlawn Avenue Campus)

1986

Breslin Cancer Center opens at Ingham Medical Center

1992

Ingham Medical Center and Lansing General Hospital merge

2007

Grand opening of Chi Heart & Surgery Center

2013

Karmanos Cancer Institute acquired by McLaren Health Care, creates largest cancer research and provider network in Michigan

2016

McLaren Greater Lansing establishes Endowed Chair for Behavioral Mental Health Nursing Education, first-ever endowed chair for MSU's College of Nursing

McLaren Greater Lansing's mission is to be the best value in health care as defined by quality outcomes and cost.

*This project isn't just about bricks
and mortar; this is about
reinventing health care delivery.*



*McLaren Greater
Lansing Foundation is a
charitable organization
whose mission is to
develop friends, raise
funds and awareness
for projects and
services that
provide quality
patient care.*

**MCLAREN GREATER LANSING
FOUNDATION TEAM**

Sarah L. Spradlin, MPA, CFRE
Vice President

Mollie Bort
Marketing Specialist

Shelly Houston
Foundation Database Supervisor

John A. Ortega
Marketing Specialist

Rachel Turek
Special Events Coordinator

Connect with the Foundation:
mclaren.org/lansingfoundation
facebook.com/mglhf
mglfoundation@mclaren.org

