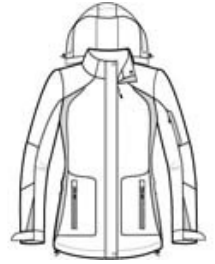


***Add \$1 extra per size after the size XL**



Our All-Season II Jacket has colorblock panels at the sides and sleeves to give it year-round appeal.

- 100% Taslan nylon shell
- 100% microfleece body lining
- 100% polyester sleeve lining for easy on/off
- 3000MM fabric waterproof rating
- Critically seam-sealed for added waterproof protection
- 3000G/M² fabric breathability rating
- Gently contoured silhouette
- Zip-off hood with drawcord and toggles
- Storm flap with hook and loop closure
- Two-way zipper with zipper garage
- Interior cell phone pocket
- Interior zippered pocket
- Articulated elbows for greater mobility
- Left sleeve zippered pocket
- Port Pocket™ for easy embroidery access
- Adjustable self-fabric tab cuffs with hook and loop closures
- Front zippered pockets
- Drop tail hem with drawcord and toggles for adjustability



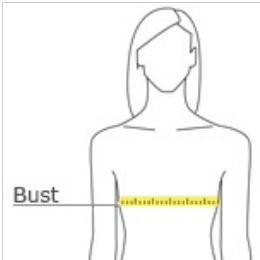
front



back

CARE INSTRUCTIONS

HOW TO MEASURE



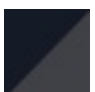




BUST
With arms down at sides, measure around the upper body, under arms and around the fullest part of the bust.

SIZE CHART

	XS	S	M	L	XL	XXL	3XL	4XL
Size	2	4/6	8/10	12/14	16/18	20/22	24/26	28/30
Bust	32-34	35-36	37-38	39-41	42-44	45-47	48-51	52-55

COLOR INFORMATION

				
Black/Black PMS 426 C	Snorkel Blue/Black PMS 7462 C	True Navy/Iron Grey PMS 276 C	True Red/Black PMS 200 C	White/Black PMS WHITE

***Add \$1 extra per size after the size XL**



Classic soft shell design merges with modern two-tone graphics in our Embark Soft Shell Jacket. This eye-catching way to battle rain and wind features a zip-through cadet collar with chin guard and adjustable cuffs for the perfect fit.

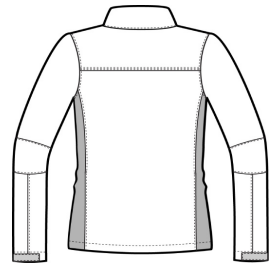
- 93/7 poly/spandex woven bonded to 100% polyester knit lining with laminated film insert to repel water and wind
- 1000MM fabric waterproof rating
- 1000G/M² fabric breathability rating
- Gently contoured silhouette
- Self-fabric adjustable tab cuffs with hook and loop closures
- Front zippered pockets
- Open hem

CARE INSTRUCTIONS

Machine wash cold on gentle cycle with like colors. Use mild detergent. Remove immediately. Do not allow to lay on itself when wet. Tumble dry low. Cool iron if needed. Do not dry clean.

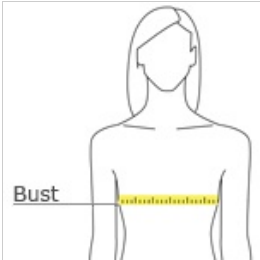


front



back

HOW TO MEASURE



BUST

With arms down at sides, measure around the upper body, under arms and around the fullest part of the bust.

SIZE CHART

	XS	S	M	L	XL	XXL	3XL	4XL
Size	2	4/6	8/10	12/14	16/18	20/22	24/26	28/30
Bust	32-34	35-36	37-38	39-41	42-44	45-47	48-51	52-55

COLOR INFORMATION



Black/Deep Grey Sea Salt
PMS 412 C White/Deep Grey
PMS 412 C

Port Authority® Ladies Core Colorblock Soft Shell Jacket. L318 \$49

PORT AUTHORITY.

***Add \$1 extra per size after the size XL**



Pair warmth with style--for a great price. Athletic-inspired colorblocking on the sides and sleeves give this soft shell up-to-date appeal, while a polyester microfleece interior keeps you comfortable.

- 100% polyester woven shell bonded to a water-resistant film insert and a 100% polyester microfleece lining
- 1000MM fabric waterproof rating
- 1000G/M2 fabric breathability rating
- Gently contoured silhouette
- Zip-through cadet collar
- Reverse coil zippers
- Front zippered pockets
- Open cuffs and hem

CARE INSTRUCTIONS

Machine wash cold with like colors. Only non-chlorine bleach when needed. Tumble dry medium. Cool iron if necessary.

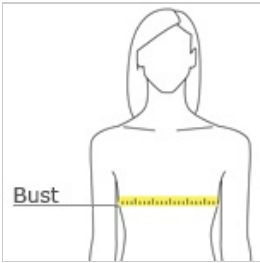


front



back

HOW TO MEASURE



BUST

With arms down at sides, measure around the upper body, under arms and around the fullest part of the bust.

SIZE CHART

	XS	S	M	L	XL	XXL	3XL	4XL
Size	2	4/6	8/10	12/14	16/18	20/22	24/26	28/30
Bust	32-34	35-36	37-38	39-41	42-44	45-47	48-51	52-55

COLOR INFORMATION

Battleship Grey/Charge Green PMS 7540 C	Battleship Grey/Dark Rose	Black/Battleship Grey PMS NTR BLACK C	Black/Imperial Blue PMS NTR BLACK C	Dress Blue/Navy/Battleship Grey PMS 533 C	Marshmallow/Battleship Grey PMS NO MATCH

Port Authority® Ladies Hooded Core Soft Shell Jacket. L335 \$51

PORT AUTHORITY.

***Add \$1 extra per size after the size XL**

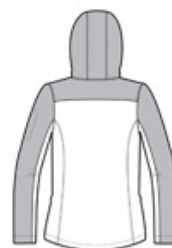


An attached hood and bold colorblocking give this well-priced, water-resistant soft shell extra rain-shielding protection and strong style.

- 100% polyester woven shell bonded to a water-resistant film insert and a 100% polyester microfleece lining
- 1000MM fabric waterproof rating
- 1000G/M2 fabric breathability rating
- Gently contoured silhouette
- Adjustable hood with locking drawcord to customize fit
- Reverse coil zippers
- Full-length interior storm flap with chin guard
- Tricot-lined front zippered pockets
- Zippered left sleeve pocket
- Open cuffs
- Open hem with locking drawcord



front

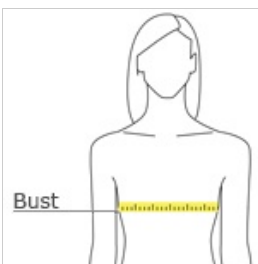


back

CARE INSTRUCTIONS

Machine wash cold with like colors only. Non-chlorine bleach when needed. Tumble dry low. Cool iron if necessary.

HOW TO MEASURE



BUST

With arms down at sides, measure around the upper body, under arms and around the fullest part of the bust.

SIZE CHART

	XS	S	M	L	XL	XXL	3XL	4XL
Size	2	4/6	8/10	12/14	16/18	20/22	24/26	28/30
Bust	32-34	35-36	37-38	39-41	42-44	45-47	48-51	52-55

COLOR INFORMATION

Black/ Battleship Grey PMS NTR BLACK PMS 2041C	Dark Fuchsia/ Battleship Grey PMS 2041C	Dress Blue Navy/ Battleship Grey PMS 533C	Night Sky Blue/ Dress Blue Navy PMS 654C	Vine Green/ Battleship Grey PMS 7741C

Port Authority® Ladies Challenger™ Jacket. L354 \$52

PORT AUTHORITY.

***Add \$1 extra per size after the size XL**



A Challenger™ Jacket designed for women! Our Ladies Challenger™ has a gently contoured silhouette and clean lines, with no added chest pocket.

- Teklon® nylon shell
- Heavyweight fleece lining for extra warmth
- Poly-filled sleeves with polyester lining
- Double-needle stitching throughout
- Two-way zipper
- Interior cell phone pocket
- Adjustable cuffs with hook and loop closures
- Slash zippered pockets, interior zippered pocket
- Port Pocket™ for easy embroidery access
- Open hem with drawcord and toggles for adjustability

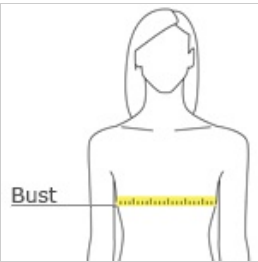


front



back

HOW TO MEASURE





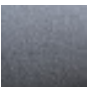





BUST

With arms down at sides, measure around the upper body, under arms and around the fullest part of the bust.

SIZE CHART

	XS	S	M	L	XL	XXL	3XL	4XL
Size	2	4/6	8/10	12/14	16/18	20/22	24/26	28/30
Bust	32-34	35-36	37-38	39-41	42-44	45-47	48-51	52-55

COLOR INFORMATION

							
Khaki/True Black PMS 7531 C	Maroon/True Black PMS 504 C	Steel Grey/True Black PMS COOL GREY 11 C	True Black/True Black PMS NTR BLACK C	True Hunter/True Black PMS 446 C	True Navy/True Navy PMS 7546 C	True Red/True Black PMS 201 C	True Royal/True Black PMS 7687 C

Port Authority® Ladies Northwest Slicker. L7710 \$49

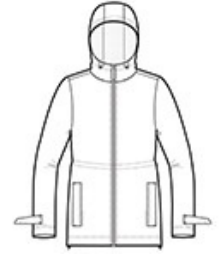
PORT AUTHORITY.

***Add \$1 extra per size after the size XL**

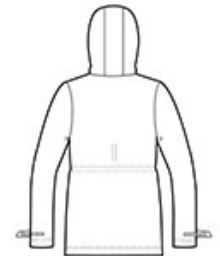


We reinvented our classic rain jacket with this critically seam-sealed slicker that features water resistance, a soft hand feel and reflective details for enhanced visibility and a modern look.

- 100% PU-coated polyester
- 100% polyester mesh-lined body and hood
- 100% polyester-lined sleeves
- 1500MM fabric waterproof rating
- Attached hood with adjustable locking drawcord
- Vision zipper
- Grommets for breathability under arms
- Longer length with adjustable locking drawcord waist
- Adjustable self-fabric tab cuffs with hook and loop closures and reflective detail
- Front zippered pockets with reflective detail
- Port Pocket™ for easy embroidery access
- Open hem with adjustable locking drawcord
- Reflective details at back



front



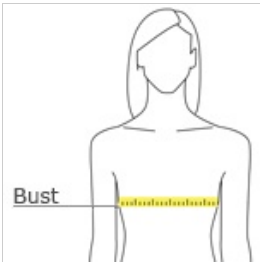
back

**

CARE INSTRUCTIONS

Machine wash cold. Only non-chlorine bleach when needed. Line dry. Do not iron. Do not dry clean.

HOW TO MEASURE





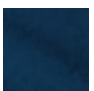



BUST

With arms down at sides, measure around the upper body, under arms and around the fullest part of the bust.

SIZE CHART

	XS	S	M	L	XL	XXL	3XL	4XL
Size	2	4/6	8/10	12/14	16/18	20/22	24/26	28/30
Bust	32-34	35-36	37-38	39-41	42-44	45-47	48-51	52-55

COLOR INFORMATION

					
Black PMS NTR Black	Isla Blue PMS 631 C	Navy PMS 533 C	Northern Grey PMS 424 C	Pink Horizon PMS 7635 C	Slicker Yellow PMS 1235 C



Ladies Rain Jacket. EB551 \$87

***Add \$1 extra per size after the size XL**



From misty mornings to evening downpours, this fully seam-sealed, completely waterproof colorblock jacket will help keep you dry, warm and protected from whatever Mother Nature throws at you. Highly waterproof and breathable 5K/5K fabric. 5000MM fabric water protection rating, 5000G/M² fabric breathability rating, detachable hood with locking drawcord for adjustability, exterior storm flap with hook and loop closures, front zippered pockets, adjustable tab cuffs with hook and loop closures and an open hem with locking drawcord. Contrast Eddie Bauer logo on right hem. WeatherEdge[®] logo on left sleeve. 100% polyester doobby shell, mesh body lining, 100% nylon accents.

CARE INSTRUCTIONS

MACHINE WASH COLD WITH LIKE COLORS GENTLE CYCLE, TUMBLE DRY LOW DO NOT BLEACH DO NOT DRY CLEAN COOL IRON IF NEEDED

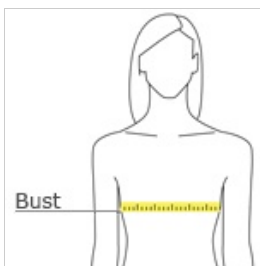


front



back

HOW TO MEASURE



BUST

With arms down at sides, measure around the upper body, under arms and around the fullest part of the bust.

SIZE CHART

	XS	S	M	L	XL	2XL	3XL	4XL
Size	2	4/6	8/10	12/14	16/18	20/22	24/26	28/30
Bust	32-33	34-35	36-37	38-40	41-43	44-46	47-49	50-52

COLOR INFORMATION



Black/Steel Grey
PMS BTR Black
C

Deep Sea Blue/Dark Adriatic
PMS 2965C



Radish/Grey Steel
PMS 7636C



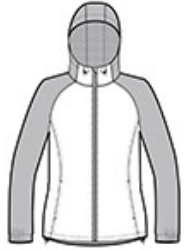
White/Grey Steel
PMS White

***Add \$1 extra per size after the size XL**

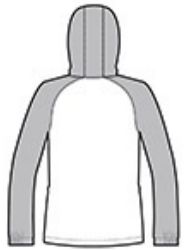


A heather print gives this performance wind jacket a sporty, energized look.

- 100% polyester shell
- 100% polyester mesh body and hood lining
- 100% polyester woven sleeve lining
- Gently contoured silhouette
- Tag-free label
- Three-panel hood with drawcord and toggles
- Angled chin guard for additional comfort
- Exposed Vislon zipper
- Princess seams with integrated front zippered pockets
- Half elastic, half self-fabric cuffs for comfort
- Port Pocket™ at left chest for easy embroidery access
- Slight drop tail hem
- Drawcord hem with toggles



front



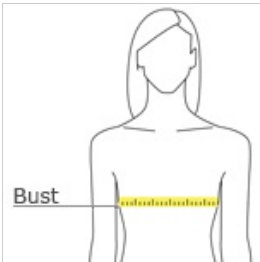
back

**

CARE INSTRUCTIONS

Machine wash cold. Only non-chlorine bleach when needed. Tumble dry low. Warm iron if necessary. Do not dry clean.

HOW TO MEASURE



BUST

With arms down at sides, measure around the upper body, under arms and around the fullest part of the bust.

SIZE CHART

	XS	S	M	L	XL	XXL	3XL	4XL
Size	2	4/6	8/10	12/14	16/18	20/22	24/26	28/30
Bust	32-34	35-36	37-38	39-41	42	45-47	48-51	52-55

COLOR INFORMATION

Black Heather/ Black PMS HEATHERED	Pink Raspberry Heather/ Pink Raspberry PMS HEATHERED	True Navy Heather/ True Navy PMS HEATHERED	True Royal Heather/ Black PMS HEATHERED

***Add \$1 extra per size after the size XL**



Our budget-friendly soft shell is made for dashing to the office or for activities like hiking or golfing. A water-resistant shell joins a breathable mesh liner, giving this jacket transitional, all-season versatility with plenty of stretch for movement.

- 100% polyester knit shell bonded to a water-resistant film insert and a 100% polyester mesh interior
- 1000MM fabric waterproof rating
- 1000G/M² fabric breathability rating
- Zip-through cadet collar with chin guard
- Reverse coil zipper
- Front zippered pockets
- Elastic binding at cuffs
- Open hem with adjustable locking drawcord

**

CARE INSTRUCTIONS

Machine wash cold. Gentle cycle. Tumble dry low. Cool iron if needed. Do not bleach. Do not dry clean.



front



back

HOW TO MEASURE



BUST

With arms down at sides, measure around the upper body, under arms and around the fullest part of the bust.

SIZE CHART

	XS	S	M	L	XL	XXL	3XL	4XL
Size	2	4/6	8/10	12/14	16/18	20/22	24/26	28/30
Bust	32-34	35-36	37-38	39-41	42-44	45-47	48-51	52-55

COLOR INFORMATION

Deep Black PMS NTR Black	Dress Blue Navy PMS 533 C	Grey Steel PMS 7540 C	Light Cyan Blue PMS 7703 C	Pink Azalea PMS 676 C	True Royal PMS 7687 C



Nike Golf Ladies Therma-FIT Hypervis Full-Zip Jacket.

779804 **\$85**



For lightweight, all-over warmth and temperature regulation, this jacket excels with Therma-FIT fabric. The chevron design across the chest provides interesting two-tone color detail. Distinctive contrast color at the neck and zipper, plus a brushed interior makes this versatile layering piece a golfing essential. Tailored for a feminine fit. Details include a reverse coil zip-through collar, open cuffs and an open hem. Thumbholes at cuffs for warmth and enhanced fit. The contrast Swoosh design trademark is embroidered on the left hem. Made of 10.2-ounce, 100% polyester Therma-FIT fabric.

CARE INSTRUCTIONS

Machine wash cold. Wash inside out. Wash with like colors. Do not use softeners. Do not use bleach. Tumble dry low. Do not iron. Do not dry clean.

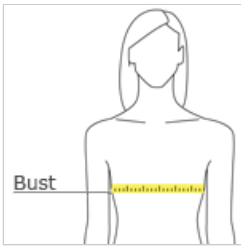


front



back

HOW TO MEASURE



BUST

With arms down at sides, measure around the upper body, under arms and around the fullest part of the bust.

SIZE CHART

	S	M	L	XL	2XL
Size	4/6	8/10	12/14	16/18	20/22
Bust	32 1/2 - 35 1/2	35 1/2 - 38	38 - 41	41 - 44 1/2	44 1/2 - 48 1/2

COLOR INFORMATION



Black/ Chartreuse
PMS PROCESS
BLACK C



Cool Grey/ Vivid
Pink
PMS 424 C



Dark Grey/ Black
PMS 425 C

***Add \$1 extra per size after the size XL**



For lightweight, all-over warmth and temperature regulation, this jacket excels with Therma-FIT fabric. The chevron design across the chest provides interesting two-tone color detail. Distinctive contrast color at the neck and zipper, plus a brushed interior makes this versatile layering piece a golfing essential. Tailored for a feminine fit. Details include a reverse coil zip-through collar, open cuffs and an open hem. Thumbholes at cuffs for warmth and enhanced fit. The contrast Swoosh design trademark is embroidered on the left hem. Made of 10.2-ounce, 100% polyester Therma-FIT fabric.

CARE INSTRUCTIONS

Machine wash cold. Wash inside out. Wash with like colors. Do not use softeners. Do not use bleach. Tumble dry low. Do not iron. Do not dry clean.

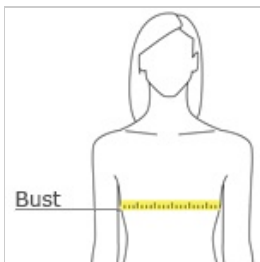


front



back

HOW TO MEASURE






BUST

With arms down at sides, measure around the upper body, under arms and around the fullest part of the bust.

SIZE CHART

	S	M	L	XL	2XL
Size	4/6	8/10	12/14	16/18	20/22
Bust	32 1/2 - 35 1/2	35 1/2 - 38	38 - 41	41 - 44 1/2	44 1/2 - 48 1/2

COLOR INFORMATION

		
Black/ Chartreuse PMS PROCESS BLACK C	Cool Grey/ Vivid Pink PMS 424 C	Dark Grey/ Black PMS 425 C

***Add \$1 extra per size after the size XL**



Built for the course, gym or just around town, this cover-up performs with comfortable stretch for uninhibited movement and Dri-FIT moisture management technology for exceptional cooling. The design includes a contrast collar and zipper, open cuffs and an open hem. Tailored for a feminine fit. The contrast Swoosh design trademark is embroidered on the upper left sleeve. Thumbholes at cuffs for warmth and enhanced fit. Made of 7.6-ounce, 93/7 polyester/spandex Dri-FIT fabric.

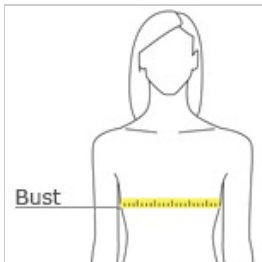


front



back

HOW TO MEASURE







BUST
With arms down at sides, measure around the upper body, under arms and around the fullest part of the bust.

SIZE CHART

	S	M	L	XL	2XL
Size	4/6	8/10	12/14	16/18	20
Bust	32 1/2 - 35 1/2	35 1/2 - 38	38 - 41	41 - 44 1/2	44 1/2 - 48 1/2

COLOR INFORMATION

			
Black/ Dark Grey PMS PRO CESS BLACK C	Dark Grey/ White PMS 425 C	Sport Fuchsia/ White PMS 227 C	White/ Dark Grey PMS NO MATCH