

Sport-Tek® Ladies Pullover Hooded Sweatshirt.
LST254 \$33

***Add \$1 extra per size after the size XL**



A proven winner improved with an updated fit, beefier rib knit details and a three-panel hood. It's also colorfast and resists shrinkage.

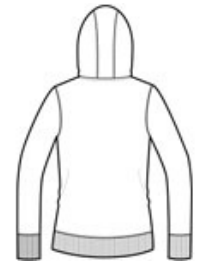
- 9-ounce, 65/35 ring spun combed cotton/poly fleece
- Twill-taped neck
- Dyed-to-match drawcord
- 2x2 rib knit cuffs and hem
- Fully coverseamed
- Set-in sleeves
- Front pouch pocket

CARE INSTRUCTIONS

Machine wash cold with like colors. Do not bleach.
 Tumble dry low. Warm iron if necessary.



front



back

HOW TO MEASURE









BUST

With arms down at sides, measure around the upper body, under arms and around the fullest part of the bust.

SIZE CHART

	XS	S	M	L	XL	XXL	3XL	4XL
Size	2	4/6	8/10	12/14	16/18	20/22	24/26	28/30
Bust	32-34	35-36	37-38	39-41	42-44	45-47	48-51	52-55

COLOR INFORMATION

					
Black PMS NTR BLACK C	Graphite Heather PMS HEATHERED	Pink Rush PMS 7435 C	True Navy PMS 533 C	Vintage Heather PMS HEATHERED	White PMS WHITE